

---

Environmental Health and Public Health  
Covid-19 Update

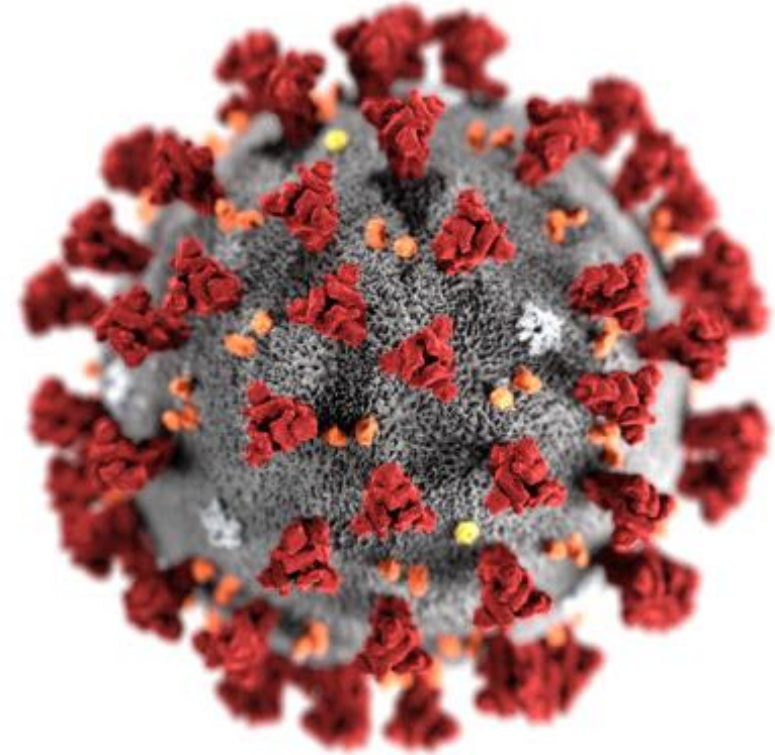
**Herefordshire Health & Safety Group**

10 June 2020

---

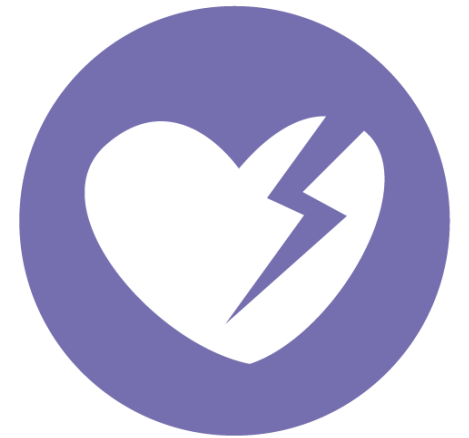
# Environmental Health and Public Health Covid-19 Update

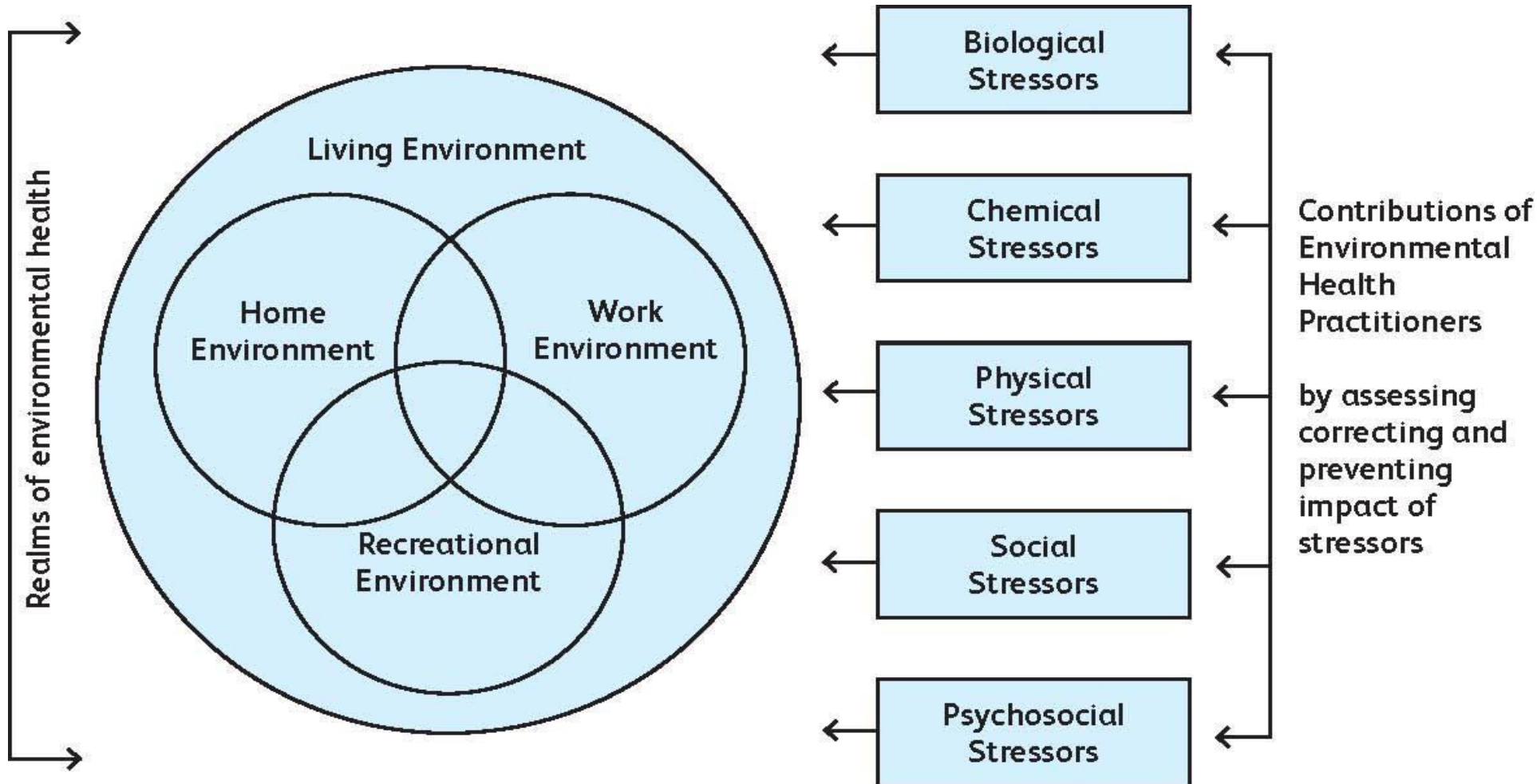
- How did we get here
- Coming out of lockdown
- Looking forward



# Introduction

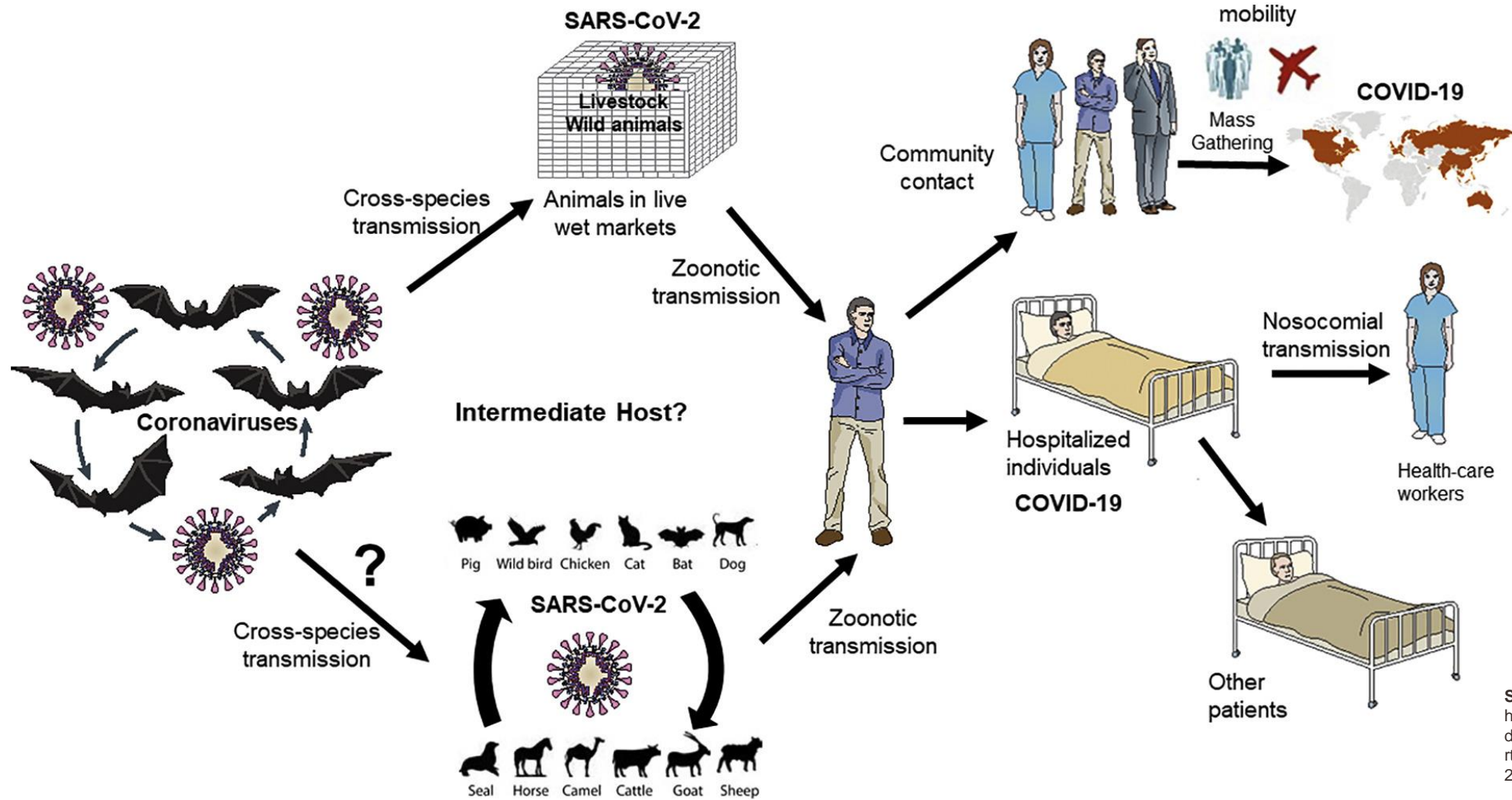
Environmental Health and Public Health







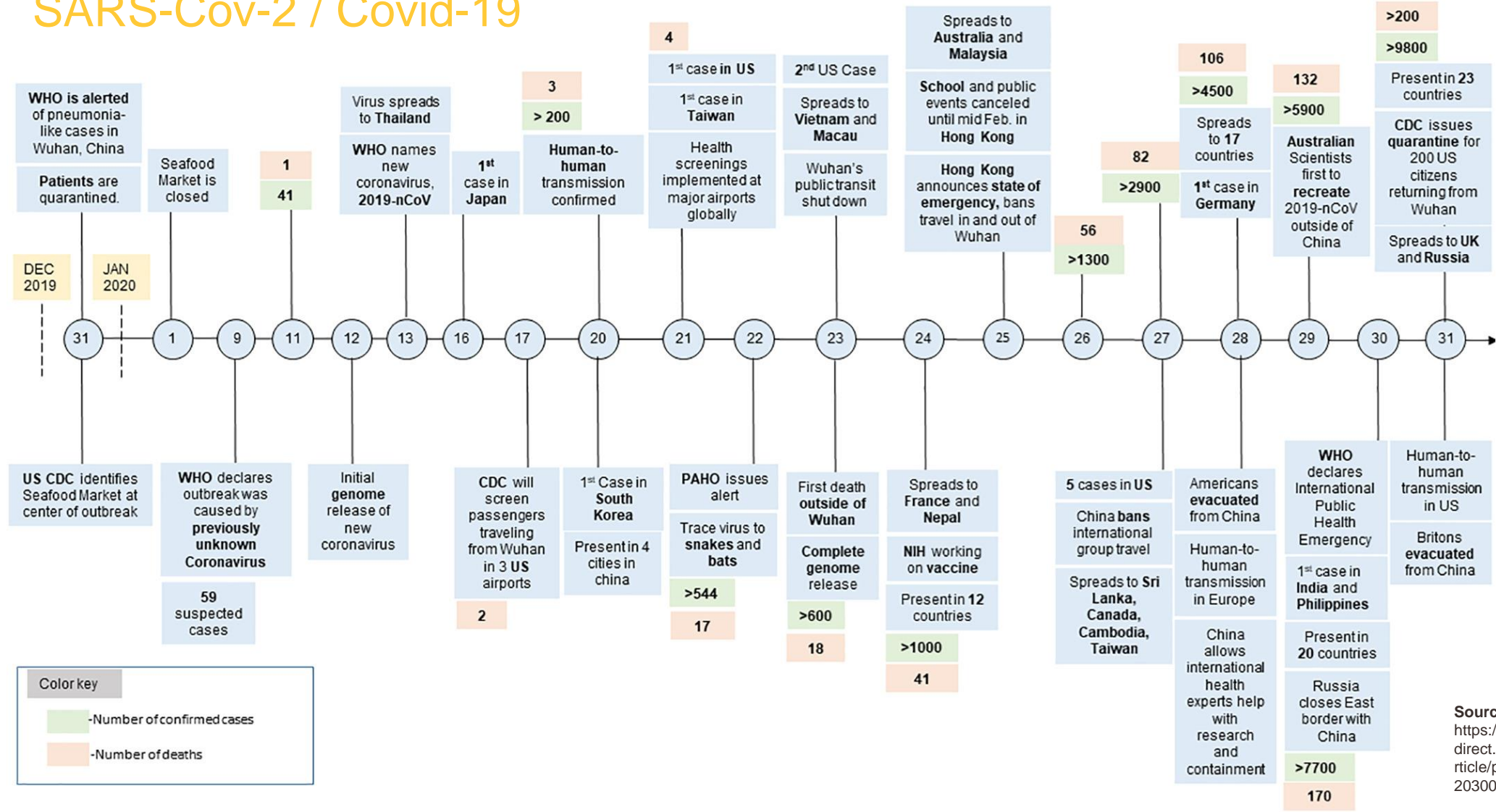
# SARS-Cov-2 / Covid-19



Source:  
<https://www.science-direct.com/science/article/pii/S2352771420300136>



# SARS-Cov-2 / Covid-19



Source:  
<https://www.science-direct.com/science/article/pii/S2352771420300136>

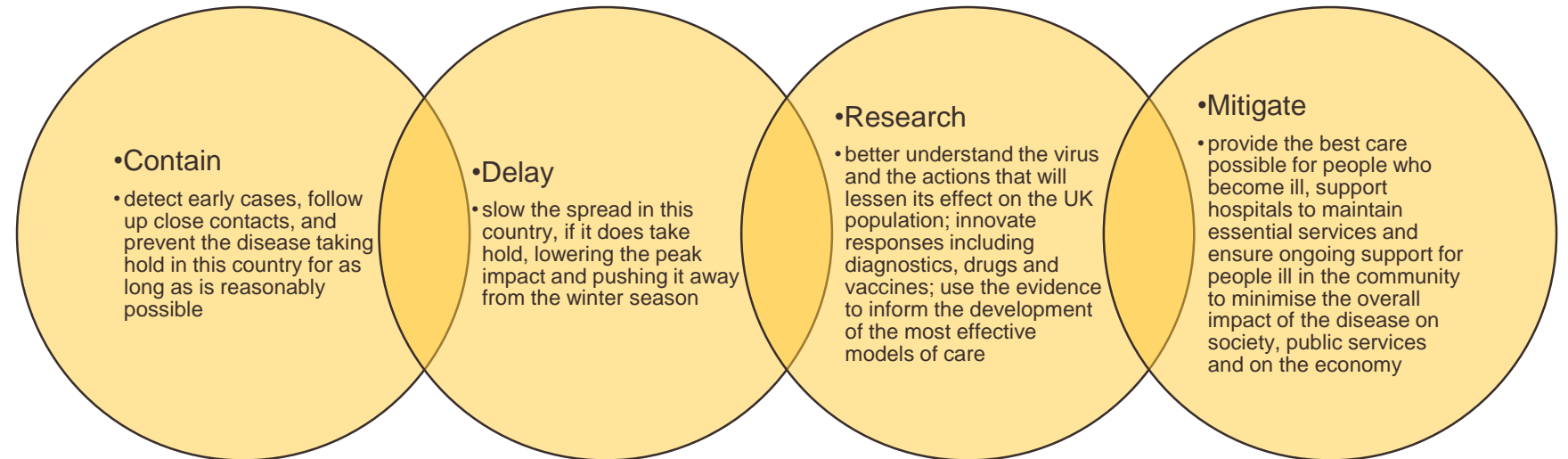


## UK Response

Department of Health  
& Social Care Policy  
Paper

***“Coronavirus action plan: a guide to what you can expect across the UK”***

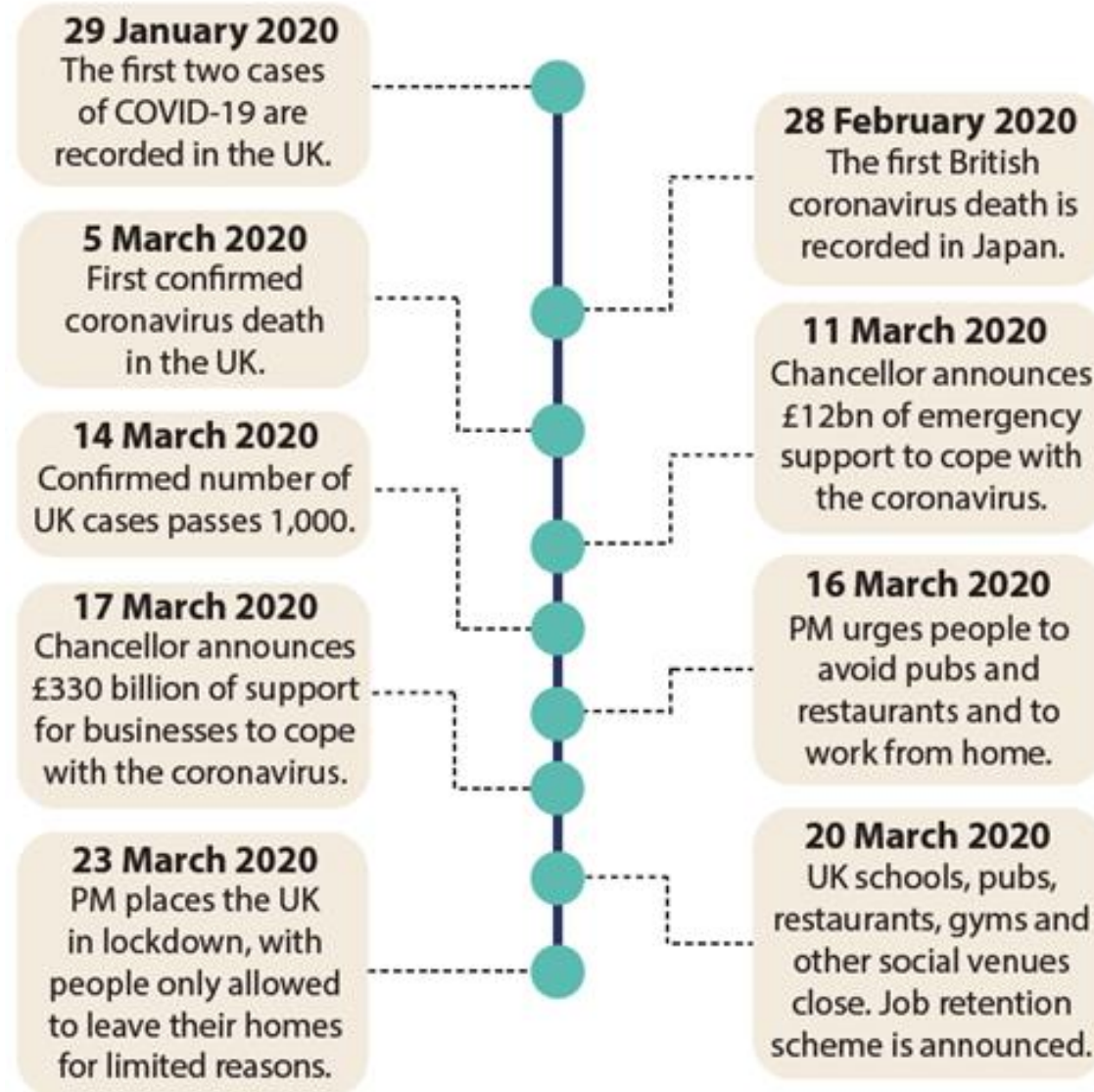
Published 3 March  
2020



<https://www.gov.uk/government/publications/coronavirus-action-plan/coronavirus-action-plan-a-guide-to-what-you-can-expect-across-the-uk>



## UK Response



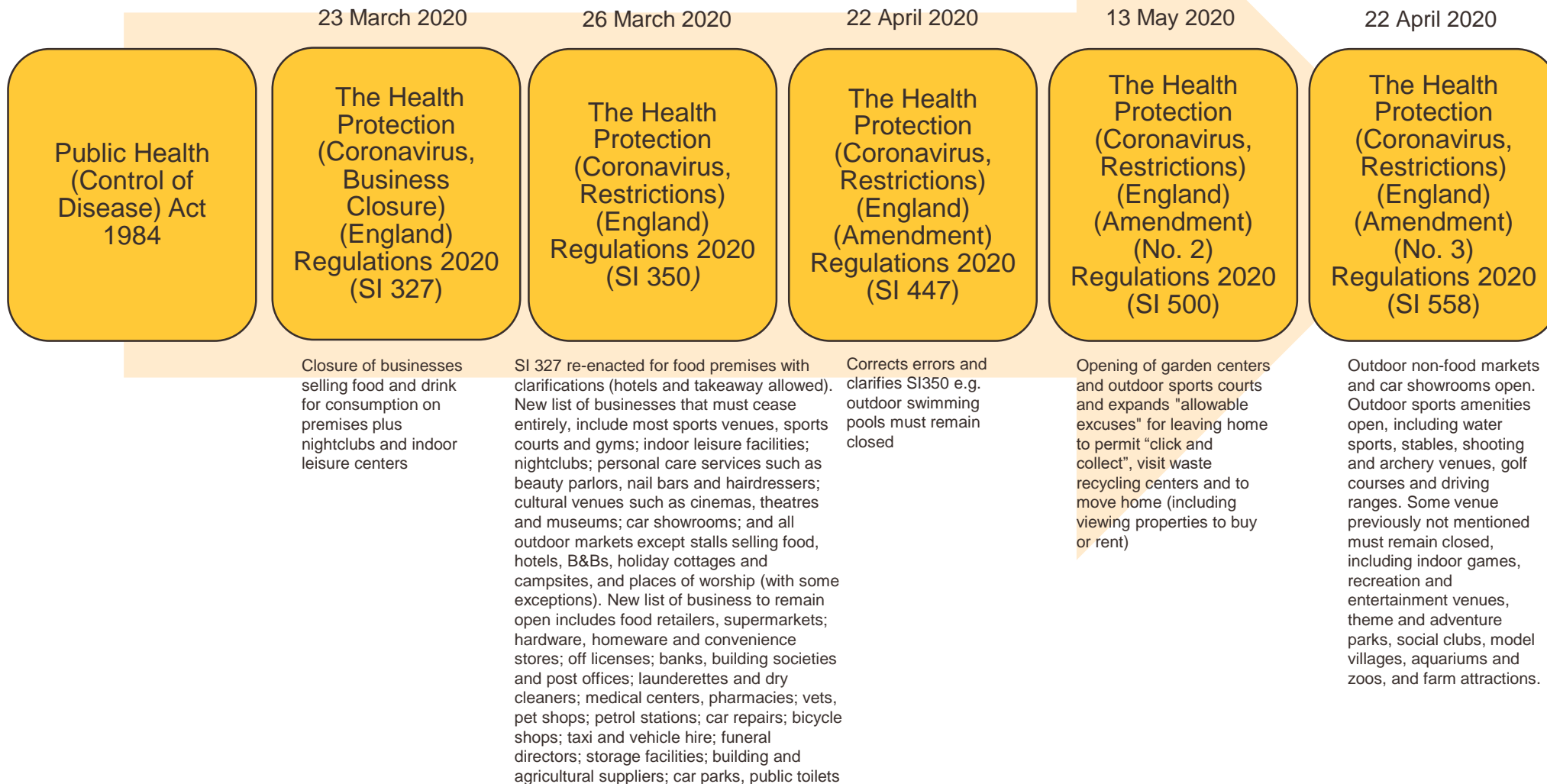
<https://www.ibisworld.com/industry-insider/analyst-insights/uk-industries-benefiting-from-social-distancing-part-one/>





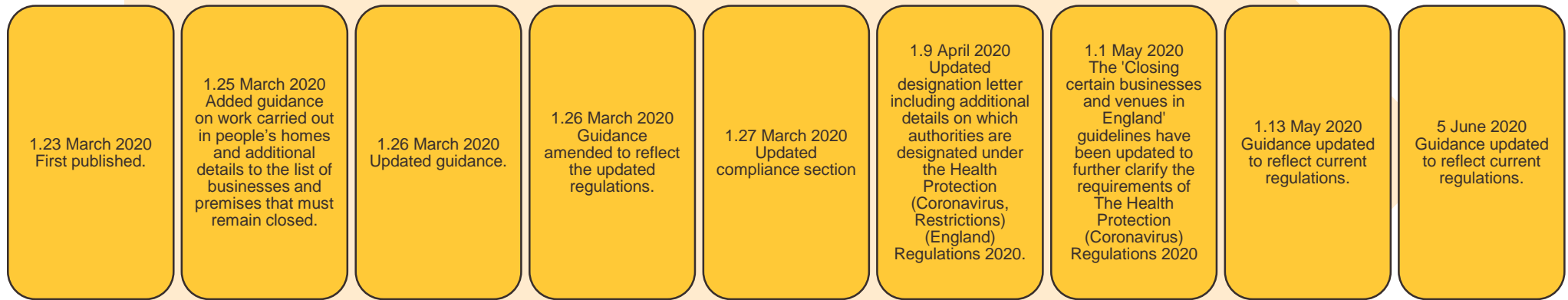
# Lockdown

Leave home only for basic necessity shopping, one form of exercise per day, medical need / vulnerable care responsibility, and traveling to and from work if absolutely necessary.





# Lockdown



<https://www.gov.uk/government/publications/further-businesses-and-premises-to-close>



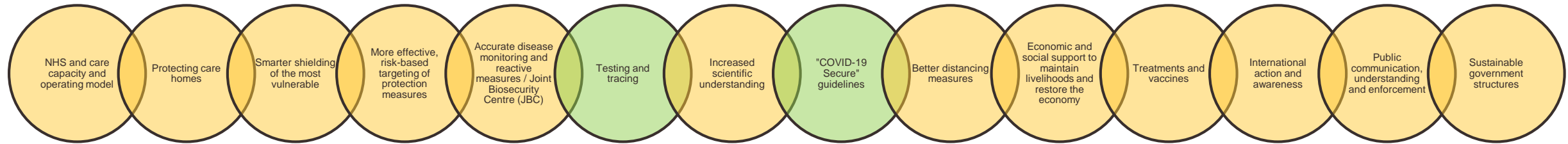
## Coming out of lockdown



HM Government

### OUR PLAN TO REBUILD:

The UK Government's COVID-19 recovery strategy



<https://www.gov.uk/government/publications/our-plan-to-rebuild-the-uk-governments-covid-19-recovery-strategy>



## NHS Test and Trace

- Anyone who tests positive for coronavirus will be contacted by NHS Test and Trace
- They will need to share information about their recent interactions and identify their contacts
- All contacts will be notified that they must self-isolate at home to help stop the spread of the virus
- Contacts of cases are identified within the time period commencing 2 days before the case was symptomatic and up to 7 days from the onset of symptoms (this is when cases are infectious)




## NHS Test and Trace

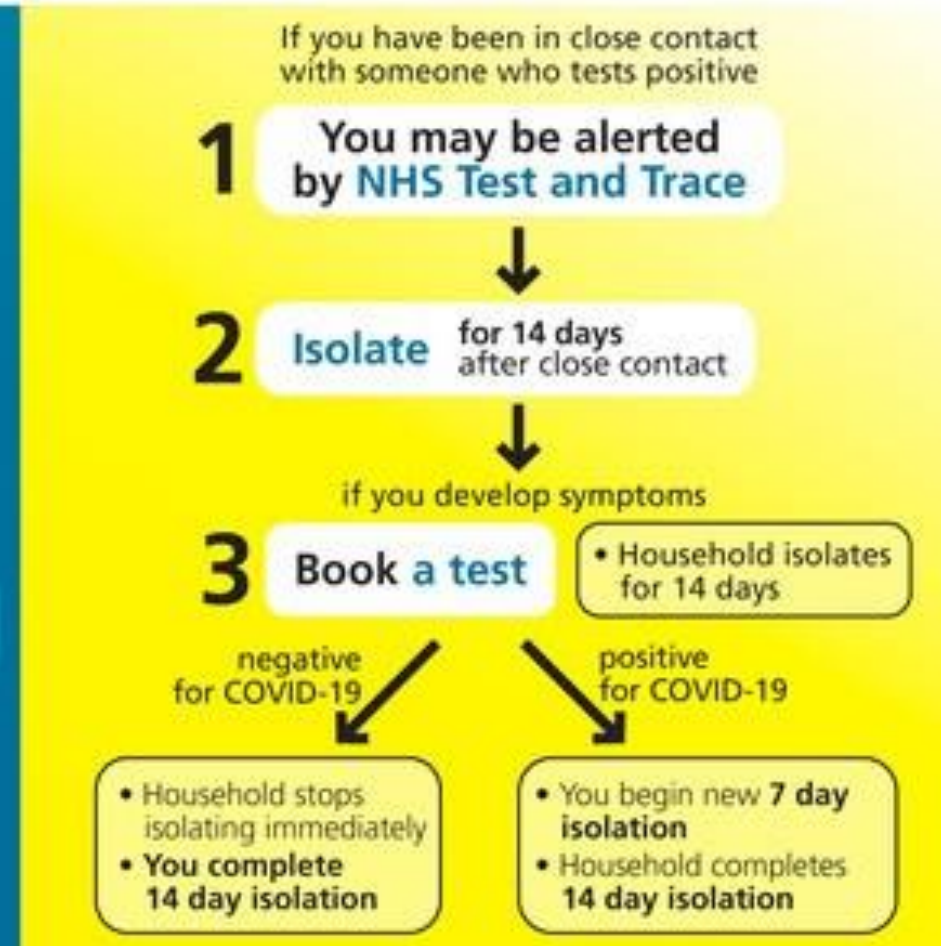
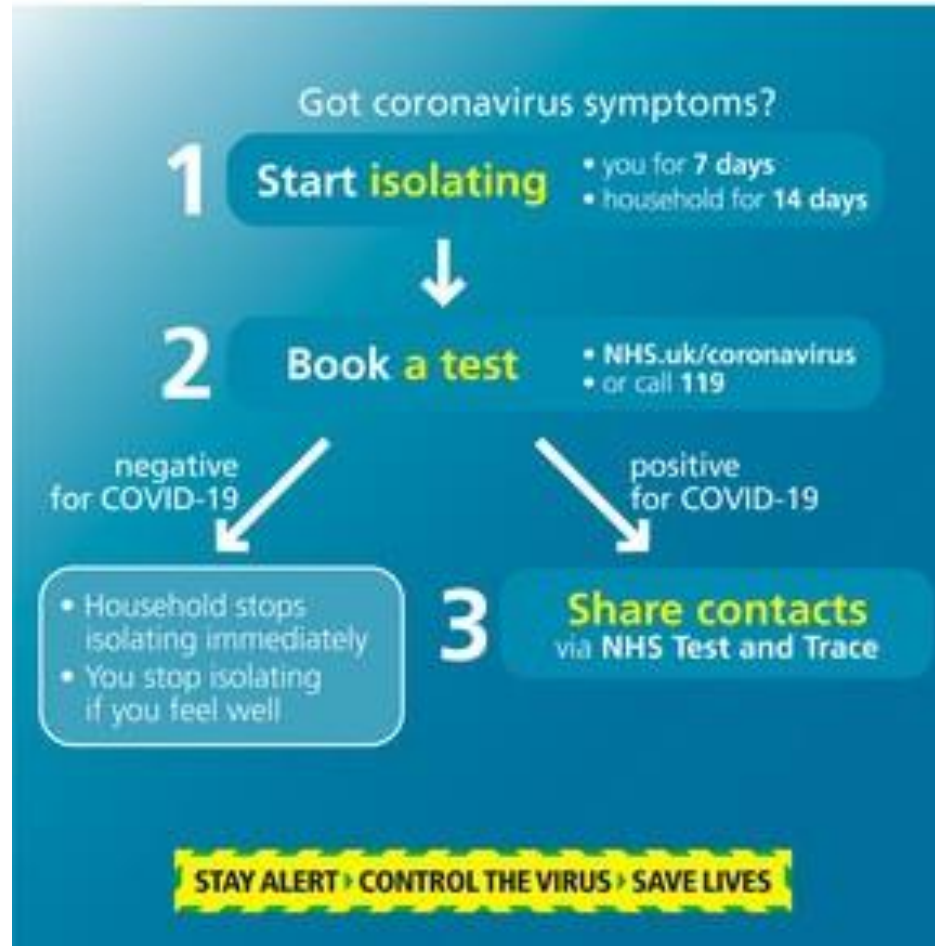
- If you test positive a contact is defined as:
  - Members of your household
  - A person who you have had face-to-face conversation with (within one metre)
  - A person who you have spent 1 minute with (within 1 metre)
  - A person who you have spent 15 minutes with (within 2 metres)
  - A person who has travelled in a small vehicle with you
  - A person who has sat near you in a large vehicle or plane
- A full list of contact definitions can be found on the Government's website  
<https://www.gov.uk/government/publications/guidance-for-contacts-of-people-with-possible-or-confirmed-coronavirus-covid-19-infection-who-do-not-live-with-the-person/guidance-for-contacts-of-people-with-possible-or-confirmed-coronavirus-covid-19-infection-who-do-not-live-with-the-person>



# NHS Test and Trace

 HM Government

 Test and Trace





## NHS Test and Trace- The LA response

- Promote social distancing
- Good hand and respiratory hygiene
- Public Health England (PHE) will notify the LA of any complex cases using local intelligence to identify contacts that are required to self-isolate
- PHE will notify the LA of cases and outbreaks linked to a premises to provide a local response (e.g. education settings, care homes, workplaces, events etc.)

[cthub\\_herefordshire@herefordshire.gov.uk](mailto:cthub_herefordshire@herefordshire.gov.uk)



## “COVID-19 Secure” guidelines

- Guidance to help employers, employees and the self-employed understand how to work safely during the coronavirus pandemic
- Practical actions for businesses to take based on 5 main steps
- 8 guides cover a range of different types of work (make sure you read all the guides relevant to your workplace)
- Each guide has specific actions for businesses to take based on these 5 main steps
- Further guidance will be published as more businesses are able to reopen

<https://www.gov.uk/guidance/working-safely-during-coronavirus-covid-19>

### Staying COVID-19 Secure in 2020

We confirm we have complied with the government's guidance on managing the risk of COVID-19

#### • FIVE STEPS TO SAFER WORKING TOGETHER •

- ✓ We have carried out a **COVID-19 risk assessment** and shared the results with the people who work here
- ✓ We have **cleaning, handwashing and hygiene procedures** in line with guidance
- ✓ We have taken all reasonable steps to **help people work from home**
- ✓ We have taken all reasonable steps to **maintain a 2m distance** in the workplace
- ✓ Where people cannot be 2m apart, we have done everything practical to **manage transmission risk**

Employer \_\_\_\_\_ Date \_\_\_\_\_

Who to contact: \_\_\_\_\_ Your Health and Safety Representative  
(or the Health and Safety Executive at [www.hse.gov.uk](http://www.hse.gov.uk) or 0300 003 1647)





## “COVID-19 Secure” guidelines



<https://www.gov.uk/guidance/working-safely-during-coronavirus-covid-19>



## “COVID-19 Secure” guidelines

### 1. Carry out a COVID-19 risk assessment

Before restarting work you should ensure the safety of the workplace by:

- carrying out a risk assessment in line with the [HSE guidance](#)

- consulting with your workers or trade unions

- sharing the results of the risk assessment with your workforce and on your website

<https://www.gov.uk/guidance/working-safely-during-coronavirus-covid-19>



## “COVID-19 Secure” guidelines

### 2. Develop cleaning, handwashing and hygiene procedures

You should increase the frequency of handwashing and surface cleaning by:

- encouraging people to follow the guidance on hand washing and hygiene

- providing hand sanitiser around the workplace, in addition to washrooms

- frequently cleaning and disinfecting objects and surfaces that are touched regularly

- enhancing cleaning for busy areas

- setting clear use and cleaning guidance for toilets

- providing hand drying facilities – either paper towels or electrical dryers

<https://www.gov.uk/guidance/working-safely-during-coronavirus-covid-19>



## “COVID-19 Secure” guidelines

### 3. Help people to work from home

You should take all reasonable steps to help people work from home by:

discussing home working arrangements

- ensuring they have the right equipment, for example remote access to work systems

- including them in all necessary communications

- looking after their physical and mental wellbeing

<https://www.gov.uk/guidance/working-safely-during-coronavirus-covid-19>



## “COVID-19 Secure” guidelines

### 4. Maintain 2m social distancing, where possible

Where possible, you should maintain 2m between people by:

- putting up signs to remind workers and visitors of social distancing guidance

- avoiding sharing workstations

- using floor tape or paint to mark areas to help people keep to a 2m distance

- arranging one-way traffic through the workplace if possible

- switching to seeing visitors by appointment only if possible

<https://www.gov.uk/guidance/working-safely-during-coronavirus-covid-19>



## “COVID-19 Secure” guidelines

### 5. Where people cannot be 2m apart, manage transmission risk

Where it's not possible for people to be 2m apart, you should do everything practical to manage the transmission risk by:

- considering whether an activity needs to continue for the business to operate

- keeping the activity time involved as short as possible

- using screens or barriers to separate people from each other

- using back-to-back or side-to-side working whenever possible

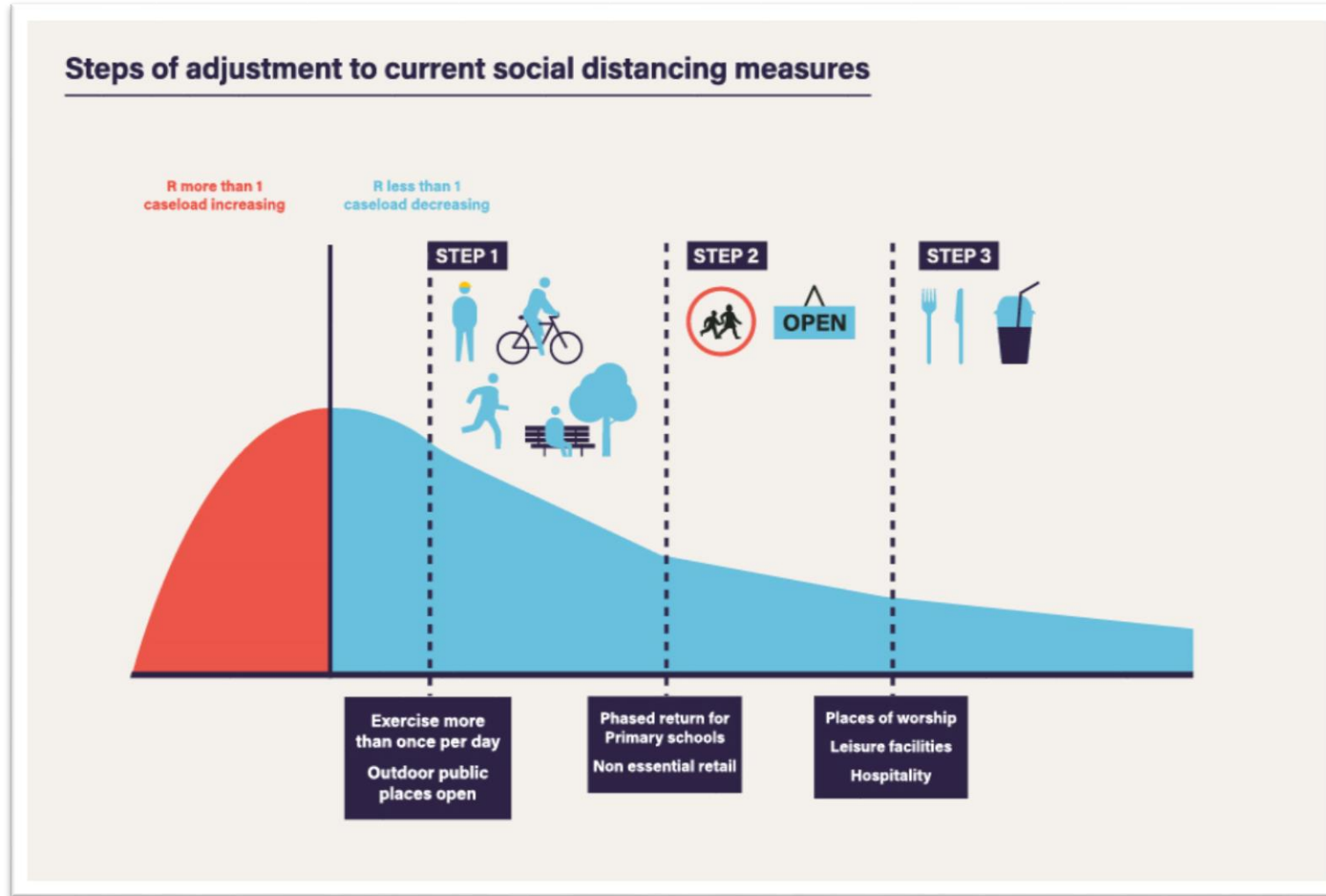
- staggering arrival and departure times

- reducing the number of people each person has contact with by using 'fixed teams or partnering'

<https://www.gov.uk/guidance/working-safely-during-coronavirus-covid-19>



## Looking forward



<https://www.gov.uk/government/news/prime-minister-sets-out-timeline-for-retail-to-reopen-in-june>



## Looking forward



**Face coverings to become mandatory on public transport (15<sup>th</sup> June 2020)**

**<https://www.gov.uk/government/news/face-coverings-to-become-mandatory-on-public-transport>**





## Looking forward

# COVID-19: PROJECTED TIMELINE FOR TREATMENT AND PREVENTION



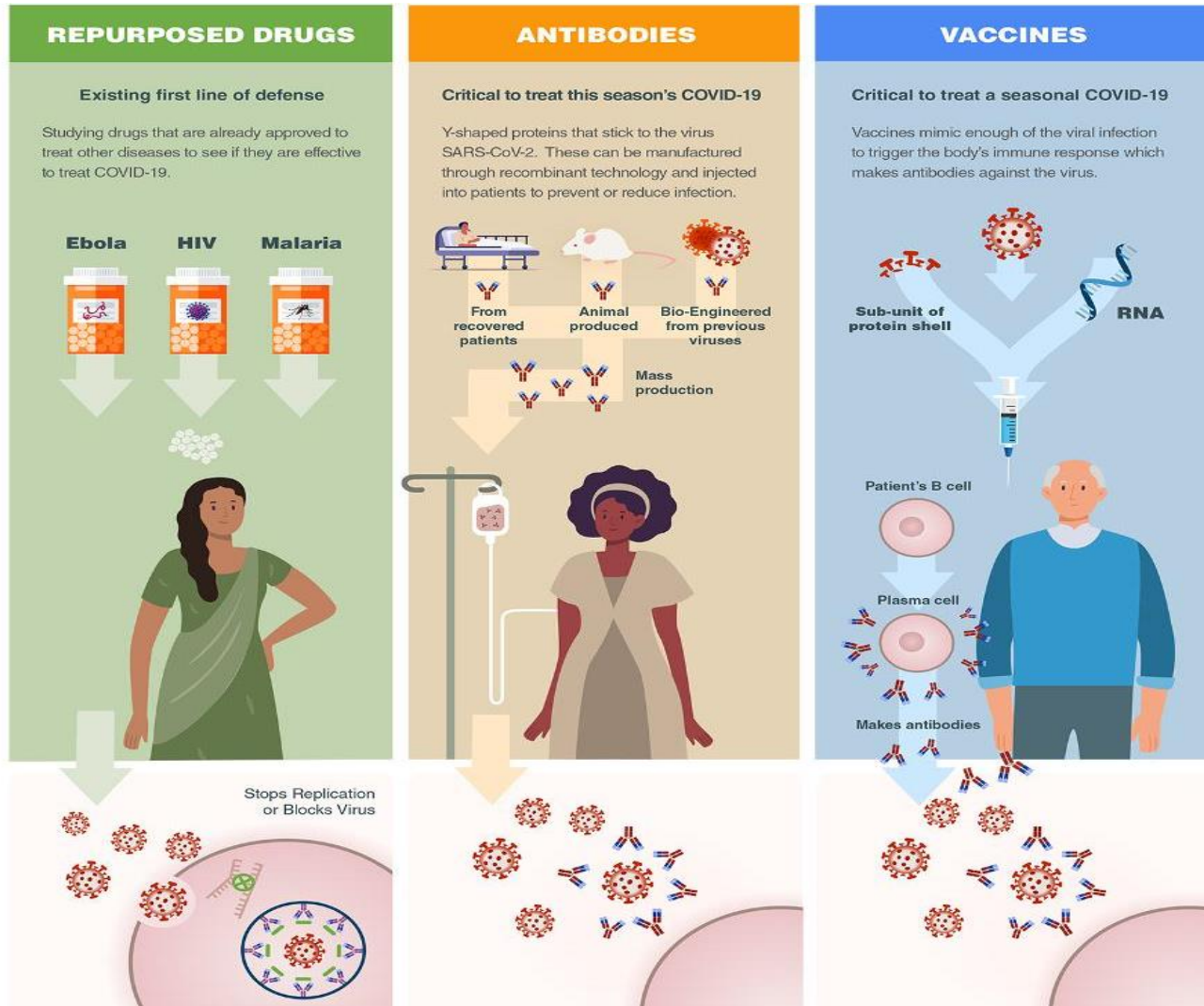
There are **66 programs** working on **3 different approaches**:



Source:  
<https://www.forbes.com/sites/johncumbers/2020/03/25/timeline-shows-3-paths-to-covid-19-treatment-and-prevention-infographic/>



# Looking forward



Source:  
<https://www.forbes.com/sites/johnncumbers/2020/03/25/timeline-shows-3-paths-to-covid-19-treatment-and-prevention-infographic/>

# Contact Details

Charles Yarnold B.Sc.(Hons), M.Sc., CMCIEH  
Environmental Health Service Manager

**Tel: 01432 260765**

**Mail: [cyarnold@herefordshire.gov.uk](mailto:cyarnold@herefordshire.gov.uk)**

Mary Paske B.Sc.(Hons), MCIEH  
Environmental Health Officer

**Tel: 01432 261864**

**Mail: [mary.paske@herefordshire.gov.uk](mailto:mary.paske@herefordshire.gov.uk)**

**[www.herefordshire.gov.uk](http://www.herefordshire.gov.uk)**